

(his)

Handwritten musical score for the first system. The piano part consists of a treble and bass staff. The treble staff contains a complex, heavily scribbled-out melody with various accidentals and ornaments. The bass staff contains a rhythmic pattern with notes and rests. There are some markings like '69' and 'A' in the bass staff.

Handwritten musical score for the second system. The piano part consists of a treble and bass staff. The treble staff contains a melody with notes and rests. The bass staff contains notes and rests. There are some markings like 'A' and '69' in the bass staff.

Flan *all. rit.*
Soq *mp*

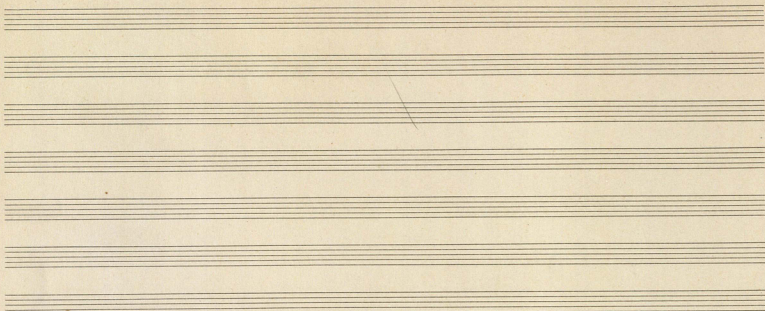
per allegretto molto intimo *cresc. t=69*

Handwritten musical score for the third system. The piano part consists of a treble and bass staff. The treble staff contains a melody with notes and rests. The bass staff contains notes and rests. There are some markings like 'mp' and 'cresc. t=69' in the bass staff.

Flan
Flan

ritando

Handwritten musical score for the fourth system. The piano part consists of a treble and bass staff. The treble staff contains a melody with notes and rests. The bass staff contains notes and rests. There are some markings like 'ritando' and 'A' in the bass staff.



Handwritten musical notation on a single staff, including notes, rests, and clefs. The notation is somewhat obscured by a wavy line drawn below it. To the right of the staff, there is a handwritten signature that reads "N. Schumann" and the number "8".

Handwritten musical notation on three staves. The notation includes notes, rests, and clefs. A large bracket on the left side of the staves is labeled "Soprano".



Handwritten musical score on a system of five staves. The top staff contains a melodic line with various note values and rests. The second staff contains a bass line with notes and rests. The third and fourth staves contain chordal accompaniment with notes and stems. The fifth staff contains a series of time signatures: $\frac{2}{4}$, $\frac{3}{8}$, $\frac{1}{2}$, $\frac{3}{4}$, and $\frac{6}{8}$.

Handwritten musical score on a system of five staves. The top staff contains a melodic line. The second staff contains a bass line with notes and rests. The third and fourth staves contain chordal accompaniment with notes and stems. The fifth staff contains a series of time signatures: $\frac{2}{4}$, $\frac{3}{8}$, $\frac{1}{2}$, $\frac{3}{4}$, and $\frac{6}{8}$.

Handwritten musical score on a system of five staves. The top staff contains a melodic line with notes and rests. The second staff contains a bass line with notes and rests. The third and fourth staves contain chordal accompaniment with notes and stems. The fifth staff contains a series of time signatures: $\frac{2}{4}$, $\frac{3}{8}$, $\frac{1}{2}$, $\frac{3}{4}$, and $\frac{6}{8}$.

Handwritten musical score on a system of five staves. The top staff contains a melodic line with notes and rests. The second staff contains a bass line with notes and rests. The third and fourth staves contain chordal accompaniment with notes and stems. The fifth staff contains a series of time signatures: $\frac{2}{4}$, $\frac{3}{8}$, $\frac{1}{2}$, $\frac{3}{4}$, and $\frac{6}{8}$.



[Carl Nielsen:]

Sindlys min Dord.

C II, 10

Håndsk.

Handwritten musical notation, first system. Includes treble and bass clefs, a key signature of one flat, and a dynamic marking of *mf*.

Handwritten musical notation, second system. Includes treble and bass clefs, a key signature of one flat, and dynamic markings of *mf* and *dim*.

Handwritten musical notation, third system. Includes treble and bass clefs, a key signature of one flat, and asterisks marking specific notes.

Handwritten musical notation, fourth system. Includes treble and bass clefs, a key signature of one flat, and dynamic markings of *dim* and *rull*.

Handwritten musical notation, fifth system. Includes treble and bass clefs, a key signature of one flat, and a large fermata over the final notes.

